



# Lighting Solutions

- Highways • Rail • Utilities • Industrial • Events
- Facilities Management • Civil • Energy
- Government • Engineering Sectors

This booklet has been produced to help you choose the correct lighting solution for your working area or activity zone.

You need to consider a number of factors when hiring the right light- including:

- ① Light Coverage
- ② Power Source
- ③ Mobility
- ④ Cost

Click to learn more



**Tower Lights**



**Mast / Floodlights**



**Intrinsically Safe**



**General Lighting**



Tower  
Lights

Mast /  
Floodlights

Intrinsically  
Safe

General  
Lighting

# Lighting Towers

Lighting towers are one of the most popular forms of lighting solutions on the market. We offer a full range of options, from hybrid and solar, to LED and traditional metal halide.

## Power Source

### Hybrid

A number of our tower lights are hybrid, meaning that they operate with a traditional engine which can also synonymously charge a battery pack within the unit. This allows the unit to intermittently run on battery power, providing a silent eco-friendly operation.

### Solar

This form of power generation has developed considerably in recent years. Large numbers of tower light manufacturers are finding solar to be increasingly applicable, especially during summer months. Solar power generation can be used in conjunction with generators, batteries or entirely solar.

Due to shorter daylight time during winter months solar powered lighting towers may need recharging.



### Engine

Tower lighting has traditionally been powered directly by an engine generator. Some tower lights still use this format, with all engine powered tower lights in our range running off diesel fuel.

Bulb, Mast  
& Mobility

Solar charge over a year		
Jan, Feb, March	Red	Multiple Recharges Required
April	Yellow	Occasional Recharge
May, Jun, Jul, Aug	Green	No Recharging Needed
Sept	Yellow	Occasional Recharge
Oct, Nov, Dec	Red	Multiple Recharges Required



**Tower Lights**

**Mast / Floodlights**

**Intrinsically Safe**

**General Lighting**

### Bulb & Mast

#### Led Lighting

Whilst more expensive than traditional bulbs, our Trime X Eco and Generac V20 tower lights both utilise LEDs which require less maintenance and have greater energy efficiency with up to 72% reduction of Co2 and fuel costs. This type of bulb is utilised by all hybrid lighting towers in the range.

#### Metal Halide

The vast majority of tower lights utilise this bulb for its extremely bright quality. Metal halide bulbs have dominated the tower light market for a large number of years.

#### Mast Height






All our tower lights feature collapsible masts, this is a standard as it allows for easy transport and improved safety. A longer telescopic mast increases the size of the illuminated area. A-Plant's tower light range vary from 7.8m up to 9m in mast height.

### Mobility

Tower lighting comes in two forms, static or mobile. Static lights will have a larger base which can increase the fuel capacity and run times of the machine. The lack of wheels reduces portability whilst also improving security. Mobile lights will include a wheeled base and tow bar. This allows for road towing and increased portability of the machine around the site.



**From 1 to 5 we have ranked each tower light against a number of attributes. [Click here to see our comparison chart.](#)**

- Lighting  Maximum coverage
- Hire Rate  Premium hire rate
- Noise  Most noise
- Environmental  Most sustainable
- Fuel Usage  Least fuel efficient

**Trime X Eco**

**Power Source**



Tower Lights

Mast / Floodlights

Intrinsically Safe

General Lighting

# Trime X Eco

Product Code: 023309

## Engine Information

Power Source	Engine Powered: Kubota Z482
Fuel Tank Capacity	110 litres
Running Time (Fuel + Battery)	200 hours
Fuel Efficiency	0.55L/h
Decibels	65db

## Lighting Information

Lighting Head	6 x 150W 48V LED
Area Coverage at average minimum lux of 20	184m <sup>2</sup>
Mast Height	8.5m
Mobility	Wheeled & Towable
Weight	0.92t
AMOSS Kit fitted	Yes
PIR Option Available	Optional



Generac V20





Tower Lights

Mast / Floodlights

Intrinsically Safe

General Lighting

# Generac V20

Product Code: 023310

## Engine Information

Power Source	Engine Powered: Kubota Z482
Fuel Tank Capacity	100 litres
Running Time (Fuel + Battery)	167 hours
Fuel Efficiency	0.6L/h
Decibels	58db

## Lighting Information

Lighting Head	4 x 320W LED floodlights
Area Coverage at average minimum lux of 20	60m <sup>2</sup>
Mast Height	8.5m
Mobility	Wheeled & Towable
Weight	0.98t
AMOSS Kit fitted	Yes
PIR Option Available	No



Generac VB9

Trime X Eco





Tower Lights

Mast / Floodlights

Intrinsically Safe

General Lighting

# Generac VB9

Product Code: 023303

## Engine Information

Power Source	Engine: Kohler KD350
Fuel Tank Capacity	170 litres
Running Time (Fuel + Battery)	320 hours
Fuel Efficiency	0.53L/h
Decibels	92db

## Lighting Information

Lighting Head	4 x 400W Metal Halide
Area Coverage at average minimum lux of 20	60m <sup>2</sup>
Mast Height	9m
Mobility	Wheeled & Towable
Weight	0.97t
AMOSS Kit fitted	Yes
PIR Option Available	No



SMC TL90

Generac V20





Tower Lights

Mast / Floodlights

Intrinsically Safe

General Lighting

# SMC TL90

Product Code: 023306

## Engine Information

Power Source	Engine Powered: Kubota Z482
Fuel Tank Capacity	115 litres
Running Time (Fuel + Battery)	177 hours
Fuel Efficiency	0.65L/h
Decibels	61.5db

## Lighting Information

Lighting Head	4 x 300W LED
Area Coverage at average minimum lux of 20	205m <sup>2</sup>
Mast Height	8m
Mobility	Wheeled & Towable
Weight	0.86t
AMOSS Kit fitted	Yes
PIR Option Available	No



Trime X-Hybrid

Generac VB9





Tower Lights

Mast / Floodlights

Intrinsically Safe

General Lighting

# Trime X-Hybrid

Product Code: 023308

## Engine Information

Power Source	Hybrid- Engine: Kubota Z482 Batteries: AGM ZL 06 130
Fuel Tank Capacity	222 litres
Running Time (Fuel + Battery)	1180 hours
Fuel Efficiency	0.19L/h
Decibels	0 to 62db

## Lighting Information

Lighting Head	4 x 150W LED
Area Coverage at average minimum lux of 20	127m <sup>2</sup>
Mast Height	8.5m
Mobility	Wheeled & Towable
Weight	1.28t
AMOSS Kit fitted	Yes
PIR Option Available	Optional



Generac  
VT  
Hybrid

SMC  
TL90







Tower Lights

Mast / Floodlights

Intrinsically Safe

General Lighting

# Generac VT Hybrid

Product Code: 023304

## Engine Information

Power Source	Hybrid – Engine: Yanmar L70N
Fuel Tank Capacity	160 litres
Running Time (Fuel + Battery)	665 hours
Fuel Efficiency	0.24L/h
Decibels	67db

## Lighting Information

Lighting Head	4 x 150W LED
Area Coverage at average minimum lux of 20	20m <sup>2</sup>
Mast Height	8.5m
Mobility	Wheeled & Towable
Weight	1.23t
AMOSS Kit fitted	Yes
PIR Option Available	No



Trime X-Solar

Trime X-Hybrid





Tower Lights

Mast / Floodlights

Intrinsically Safe

General Lighting

# Trime X-Solar

## Engine Information

Power Source	Hybrid- Engine: Kubota Z482 Solar Panel: LG335
Fuel Tank Capacity	300 litres
Running Time (Fuel + Battery)	2,859 hours
Fuel Efficiency	0.55L/h
Decibels	0 to 62db

## Lighting Information

Lighting Head	4 x 100W
Area Coverage at average minimum lux of 20	85m <sup>2</sup>
Mast Height	8.5m
Mobility	Wheeled & Towable
Weight	1.9t
AMOSS Kit fitted	Yes
PIR Option Available	Optional



SMC  
TL55  
Solar

Generac  
VT  
Hybrid





Tower Lights

Mast / Floodlights

Intrinsically Safe

General Lighting

# SMC TL55 Solar

Product Code: 044701

## Engine Information

Power Source	Battery: 6 x 150Ah deep cycle AGM
Fuel Tank Capacity	0 litres
Running Time (Fuel + Battery)	Up to 500 Hours
Fuel Efficiency	0 L/h
Decibels	0

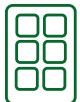
## Lighting Information

Lighting Head	4 x 60 Watt LED
Area Coverage at average minimum lux of 20	
Mast Height	5.5m
Mobility	Wheeled & Towable
Weight	1.16t
AMOSS Kit fitted	Yes
PIR Option Available	Yes



SMC SL80

Trime X-Solar





Tower Lights

Mast / Floodlights

Intrinsically Safe

General Lighting

# SMC SL80

Product Code: 023241

## Engine Information

Power Source	Engine: Kubota Z482
Fuel Tank Capacity	170 litres
Running Time (Fuel + Battery)	265 hours
Fuel Efficiency	0.65L/h
Decibels	61.5db

## Lighting Information

Lighting Head	4 x 320W LED
Area Coverage at average minimum lux of 20	205m <sup>2</sup>
Mast Height	8m
Mobility	Pallet Style
Weight	1.05t
AMOSS Kit fitted	Not Applicable
PIR Option Available	No



SMC  
TL55  
Solar





Tower Lights

Mast / Floodlights

Intrinsically Safe

General Lighting

# Comparison Chart

	Light Coverage		Cost	Power Source			Mobility
	Height	Light Head	Hire Rate	Noise	Environmental	Fuel Usage	
<b>LED Lighting Towers</b>							
Trime X Eco	8.5m		£ £ £ £ £				Wheeled
Generac V20	8.5m		£ £ £ £ £				Wheeled
Morris – SL80	8m		£ £ £ £ £				Static
<b>Metal Halide</b>							
Generac VB9	9m		£ £ £ £ £				Wheeled
Morris TL90	8m		£ £ £ £ £				Wheeled
<b>Hybrid Lighting Towers</b>							
Trime X-Hybrid	8.5m		£ £ £ £ £				Wheeled
Generac VT Hybrid	8.5m		£ £ £ £ £				Wheeled
<b>Solar Lighting Towers</b>							
Trime X-Solar	8.5m		£ £ £ £ £				Wheeled
Morris TL55	5.5m		£ £ £ £ £				Wheeled

LUX Chart

From 1 to 5 we have ranked each tower light against a number of attributes:

Lighting  
Hire Rate  
Noise



Maximum coverage  
Premium hire rate  
Most noise

Environmental  
Fuel Usage



Most sustainable  
Least fuel efficient



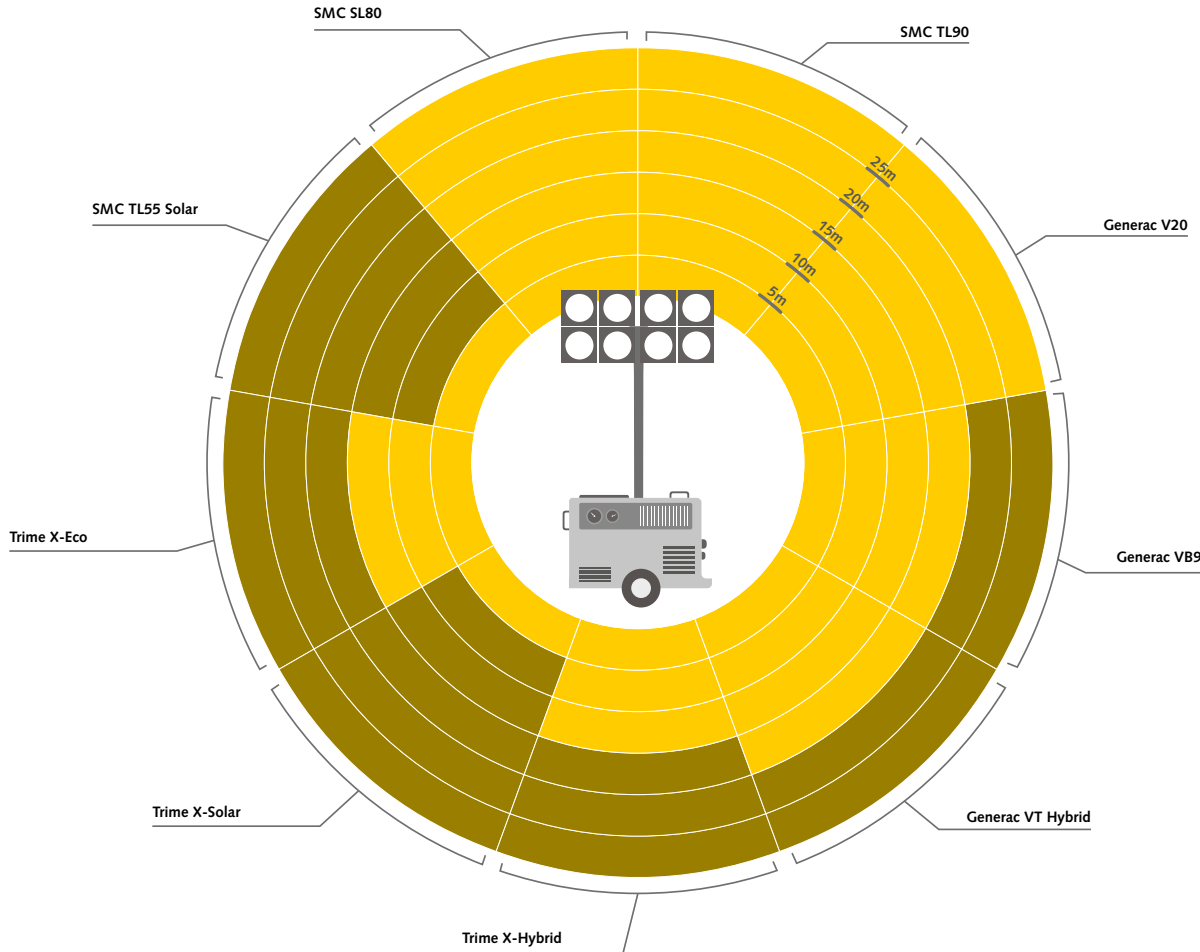
Tower Lights

Mast / Floodlights

Intrinsically Safe

General Lighting

# LUX Comparison



Minimum of 20 lux

## HSE Guidelines

Activity	Typical locations/ types of work	Avg. luminance (lux) 1x	Minimum measured illuminance (lux) 1x
Movement of people, machines and vehicles	Lorry park, corridors, circulation routes	20	5
Movement of people, machines and vehicles in hazardous areas; rough work not requiring any perception of detail	Construction site clearance, excavation and soil work, loading bays, bottling and canning plant	50	20
Work requiring limited perception of detail	Kitchens, factories assembling large components, potteries	100	50
Work requiring perception of detail	Offices, sheet metal work, bookbinding	200	100
Work requiring perception of fine detail	Drawing offices, factories assembling electronic components, textile production	500	200

Comparison Chart



Tower  
Lights

Mast /  
Floodlights

Intrinsically  
Safe

General  
Lighting

# Intrinsically Safe – Safety and ATEX

The ATEX lights have been developed for extreme environments and are built to be tough, durable and reliable. Ideal for use in confined space or hazardous areas these lighting solutions are certified for zones 1-2.

## HSE Definition of ATEX Zones:

### Zone 1

A place in which an explosive atmosphere consisting of a mixture with air of dangerous substances in the form of gas, vapour or mist is likely to occur in normal operation occasionally.

### Zone 2

A place in which an explosive atmosphere consisting of a mixture with air of dangerous substances in the form of gas, vapour or mist is not likely to occur in normal operation but, if it does occur, will persist for a short period only.



**Slam  
tube  
worklight**



Tower  
Lights

Mast /  
Floodlights

Intrinsically  
Safe

General  
Lighting

# Slam Tube Work Lights

Product Code: 50v – 023056-03

Product Code: 110v – 023199-03

Our range of Slam Tube work lights bring a new dimension to portable lighting. Exceptionally rugged and durable, the work lights use twin compact fluorescent lamps to provide highly effective lighting with very little heat. All components are protected by flexible mountings and the alloy spine gives the units immense strength. The twin lamps each have their own electronic circuit so that if one lamp fails the other one will continue to operate.

These lights can be incorporated into a Vessel Entry kit- a highly reliable lighting system comprising of a transformer and a combination of 24v slam tube work lights. ATEX certified for Zones 1-2 (gas) and 21-22 (dust).



Handheld  
Lamps





Tower  
Lights

Mast /  
Floodlights

Intrinsically  
Safe

General  
Lighting

# Handheld lamps

A-Plant offers a range of handheld, high powered LED lighting products that are virtually maintenance free and robust enough to deal with the rigours of harsh working environments.

## This includes the NightSearcher Trio-550

Product Code:

With a long range beam of up to 500m the NightSearcher TRIO 550 can provide up to 3 hours of high power lighting. There are 5 different lighting modes and a handy feature to charge your phone direct from the light, the TRIO 550 weighs a total of 646g.

The TRIO-550 has a long range beam of up to 500m, the TRIO 550 is ideal for Patrolling, Security Guards, Search & Rescue, and with robust construction it's durable enough for all applications. The TRIO 550 features an emergency function to automatically illuminate in the event of a power cut. It can be mounted on walls or in vehicles using the bracket supplied.



Output	550 Lumens
Distance	600m
Battery	1x Li-ion 3.7V 16.5Wh 4500mAh
Run time	High 3hrs   Low 7hrs   Flashing 7hrs
Recharge time	12hrs
Bulb	3xCREE LED XP-G2 cool white
Light modes	High, Half, Low, Flashing, Emergency SOS
Weight	646g
Sealed	Water and dustproof to IP54 Rating

**Slam  
tube  
worklight**



Tower  
Lights

Mast /  
Floodlights

Intrinsically  
Safe

General  
Lighting

# General Lighting

At A-Plant, we offer a huge range of general lighting solutions from portable handheld to tripod and festoon lighting.

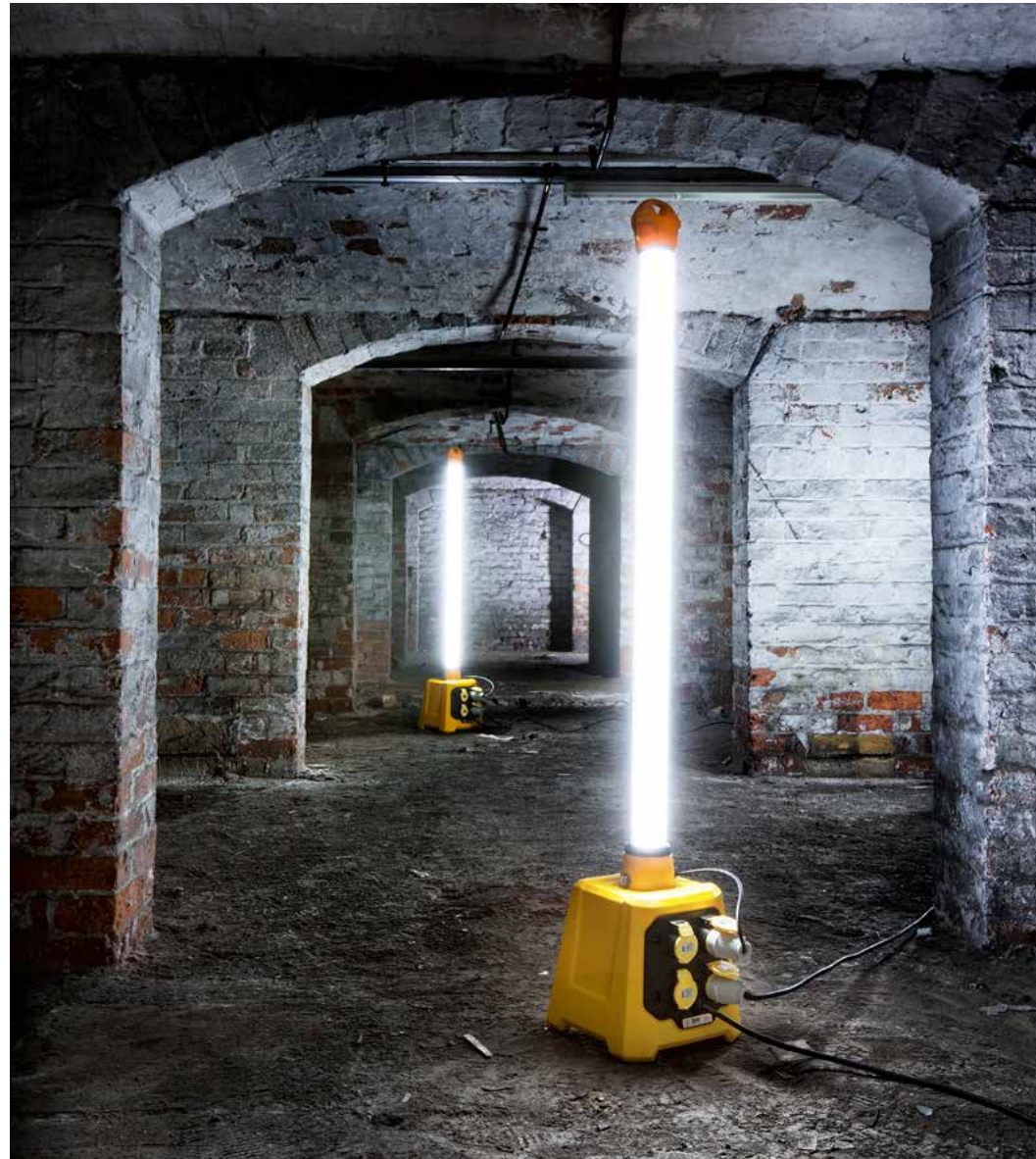
These lighting solutions are robust products chosen for their quality, reliability and usability. We ensure all our products are rated as standard and bring only the latest lighting solutions into our fleet.

We can supply lighting solutions across many sectors:

- Construction • Industrial • Facilities Management
- Civil • Energy • Rail • Events

Perfect for you trade

- Electricians • Decorators • Builders • Plasterers
- Engineers • Labourers • Plumbers • Welders
- Painters



Plasterers  
Light



Tower  
Lights

Mast /  
Floodlights

Intrinsically  
Safe

General  
Lighting

# Plasterers Lighting

Product Code: 110v Defender Uplight - 252023-03

Plastering is an art form and one that can take a long time to get right. To help achieve that A-Plant offers a range of plasterers lights from anti-corrosive floor standing units to tripod mounted LED lights and 360 degree uplights.

This range includes the 110v Defender Uplight. A tough, versatile solution built from extremely strong plastic providing exceptional lighting capabilities.

Features:

Anti-slip rubber base

4-way 110v splitter for increased versatility.

Output	2462 lumens 360 degree
Voltage	110v
Power	54w
Rating	IP44



Festoon



Tower  
Lights

Mast /  
Floodlights

Intrinsically  
Safe

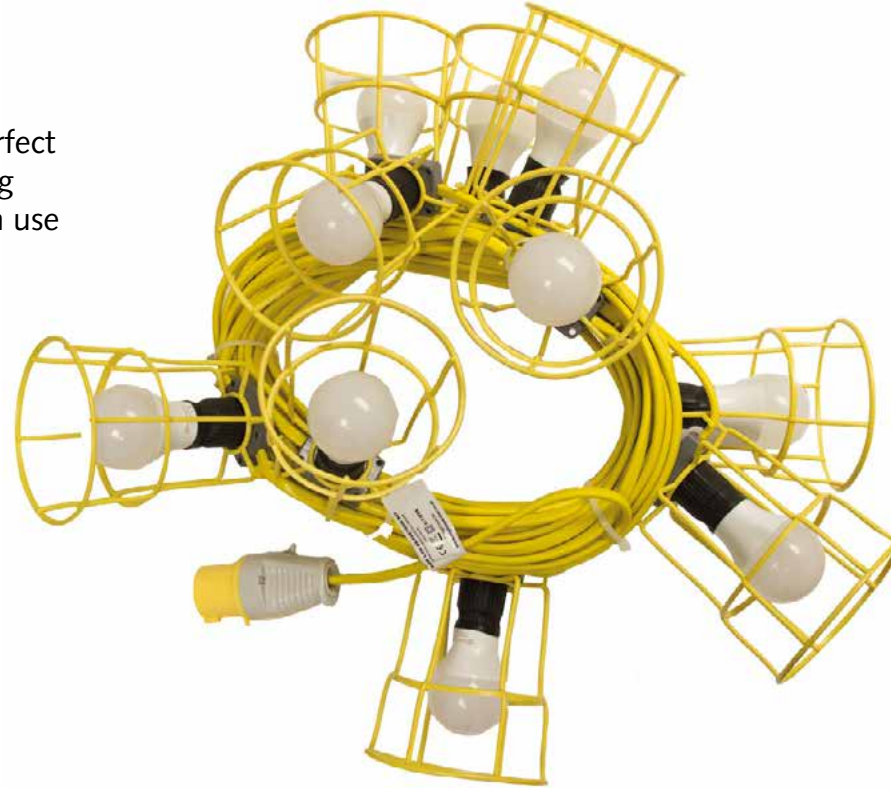
General  
Lighting

# Festoon Lighting

Product Code: 252005-03

Our festoon lighting is available in 22m/55m lengths. Perfect for scaffolding and lighting walkways, the festoon lighting utilises ultra-low energy and provides strong lighting with use of LED bulbs.

Lengths	22m/50m
Casing	IP165
Bulb	20w LED



Galaxy  
E-PRO

Plasterers  
Light



Tower  
Lights

Mast /  
Floodlights

Intrinsically  
Safe

General  
Lighting

# Galaxy E-PRO

Product Code: 023/120

Offering 3500 Lumens light output and weighing only 1.24kg with 4.5 hours of run time the Galaxy E-PRO is a highly portable LED work light.

A powerful battery powered work light, the Galaxy E-Pro from NightSearcher can provide excellent lighting for any work area with. With 3 different modes: full, half and dimmed the Galaxy E-Pro features a robust design including high visibility reflectors as standard, all without the need for trailing cables.



Output	3500 lumens
Distance	30m
Battery	Rechargeable Li-ion
Run time	Up to 12 hours
Charging time	6 hours
Rating	IP54
Weight	1.24kg

Galaxy  
2000

Festoon



Tower  
Lights

Mast /  
Floodlights

Intrinsically  
Safe

General  
Lighting

# Galaxy 2000

Product Code: 023/121

A powerful rechargeable LED work light the Galaxy 2000 has two light modes: full or half power. With a fold flat design, the Galaxy 2000 is very compact and can be wall or tripod mounted to give a 20m flood beam. It features 360° movement from the adjustable bracket included.

Output	2000 lumens
Distance	20m
Battery	Rechargeable Li-ion
Run time	4 hours
Charging time	8 hours
Rating	IP54
Weight	910g



Solaris  
Duo

Galaxy  
E-PRO



Tower  
Lights

Mast /  
Floodlights

Intrinsically  
Safe

General  
Lighting

# LED Wobblelight Jr

Product Code: 023/122

Favoured across so many work sites the LED Wobblelight Jr is a 360 degree self-righting LED lighting solution. Exceedingly rugged and offering no hot surfaces it is perfect for the construction environment. Featuring low energy consumption, the Wobblelight Jr stands at just 27" tall making it the most compact of the Wobblelight range. Built from tough polyethylene resin and Lexan polycarbonate dome.

Output	9000 lumens
Lighting Radius	20+ foot
Height	27 inches
Power	Mains powered
Weight	6.3kg



Light  
Balloon



Tower  
Lights

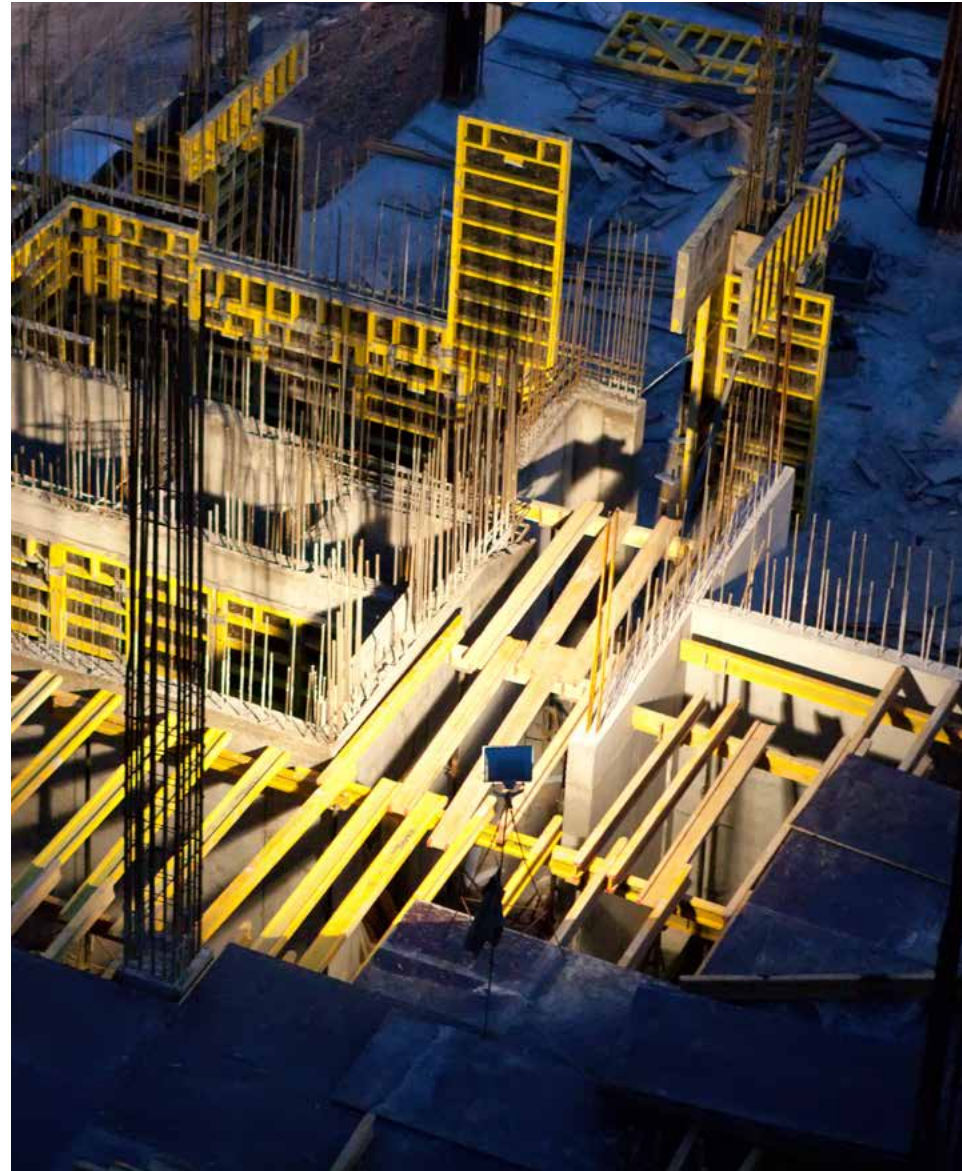
Mast /  
Floodlights

Intrinsically  
Safe

General  
Lighting

## Mast & Floodlights

These portable lighting solutions can provide an alternative option to traditional tower lights. Typically utilising mains or battery power these lights are very portable, most are collapsible and can be powered using small generators. LED's are the choice of bulb, the battery powered solutions are excellent for short work with great portability.



Solaris  
Duo





Tower  
Lights

Mast /  
Floodlights

Intrinsically  
Safe

General  
Lighting

# Solaris Duo

Product Code: 023/123

One of the most powerful battery floodlights in the world the Solaris Duo can be hired with its specialist outdoor case. Seen by many as a replacement for generator powered halogen because of its fully portable pack and emission and noise free running. What's more it only takes just a couple of minutes to install.

Output	32,000 Lumens
Height	Up to 1.9m
Battery	14.8v 36A/h Li-on
Run time	Up to 32 hours
Charging time	10 hours
Rating	IP65
Weight	19.2kg



Solaris  
MegaStar



Tower  
Lights

Mast /  
Floodlights

Intrinsically  
Safe

General  
Lighting

# Solaris MegaStar

Product Code: 023/124

Designed for floodlighting large areas the Solaris MegaStar has up to 16,000 lumens with 28hours of running time. Maximum height is 3.5 metres.

Output	16,000 Lumens
Height	Up to 3.5m
Battery	14.8v 18A/h Li-on
Run time	Up to 16 hours
Charging time	8 hours
Weight	8.1kg



Light  
Balloon

Solaris  
Duo



Tower  
Lights

Mast /  
Floodlights

Intrinsically  
Safe

General  
Lighting

# Wacker Neuson Light Balloon

Product Code: 023041-03

Designed to provide the highest quality lighting for night-time workplace safety and productivity with less power consumption. These energy saving Balloon Lights are lightweight, tripod mounted and feature a 90cm diameter balloon which is self-inflated by built-in fan. The tubular envelope provides effective light distribution across 360°. They are ideal for use in rescue situations or any worksite settings where a well-lit area is required to work.

With the flexible and compact light balloon module system from Wacker Neuson, you quickly have a light balloon that is perfectly adapted to your lighting needs. Thanks to a simple design, the set-up of the light balloon is quick and easy. The 110,000-lumen metal halide lamp offers a very bright light, but without the glare. This makes it particularly suitable for use in road traffic. The variable height tripod gives you light coverage up to 5m providing a flexible light solution inside and out.

Output	50-80,000 Lumens
Light Head	Metal halide or halogen lamp
Height	2.2 – 5m
Voltage	230 V
Power	1.13kW
Weight	Min 23.2kg - Max 41.9kg



Tower  
Star

Solaris  
MegaStar



Tower  
Lights

Mast /  
Floodlights

Intrinsically  
Safe

General  
Lighting

# NightSearcher Tower Star

Product Code: 023/125

This portable floodlight provides upto 16000 lumens to your work area. With 360° lighting capabilities and up to 50m lighting distance achieved, the Tower Star is IP66 rated and can be either main or battery powered.

Supported by its collapsible tripod, the fully adjustable Tower Star can be raised to 2.8m tall. And with a 10 metre cable as standard, provides flexibility in your lighting solutions.

Output	16,000 Lumens
Light Head	6 LED lamp heads
Height	Up to 2.8m
Voltage	240V or 110V
Power source	Mains or battery
Rating	IP66



Ritelite  
K50

Light  
Balloon



Tower  
Lights

Mast /  
Floodlights

Intrinsically  
Safe

General  
Lighting

## Ritelite K50

This flood light is designed with portability in mind, the simple design allows for easy collapsibility and transport utilising the rugged wheels attached. With a mast reaching 5 metres in height, providing 180°-360° lighting, the K50 can omit 150,000 lumens at only 1200W energy consumption.

The K50 includes numerous safety features such as: mast safety system, automatic mast raise safety lock, RCD electrical safety isolation, built in level gauge and an automatic brake incorporated into the manual winch.

Output	150,000 Lumens
Light Head	4 or 6 200w LED light heads
Height	5m
Voltage	110V-240V
Power source	Mains or generator powered
Weight	215-241kg
Portability	Wheeled design



Tower  
Star



**Tower  
Lights**

**Mast /  
Floodlights**

**Intrinsically  
Safe**

**General  
Lighting**



Name

Company

E-Mail

Tel

Enquiry